

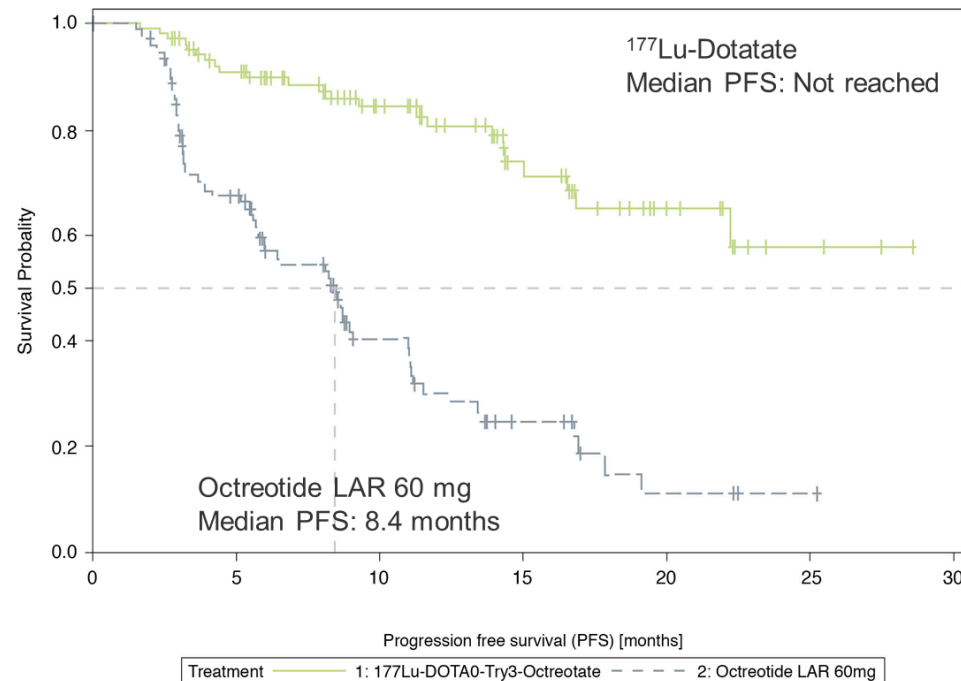
Advanced Accelarator Applications

Resultate der pivotalen Phase 3 NETTER-1 Studie

Lutathera[®] verlängert progressionsfreies Überleben signifikant

N = 229 (ITT)
 Number of events: 90
 • ¹⁷⁷Lu-Dotatate: 23
 • Oct 60 mg LAR: 67

Hazard Ratio [95% CI]
 0.209 [0.129 – 0.338]
Risk reduction: 79.1
p < 0.0001



All progressions centrally confirmed and independently reviewed for eligibility (SAP)